

# COMMERCIAL DOOR 5000

WIND-RATED DOOR - SEVERE

SERIES

## DBCI's Commercial Steel Curtain Roll-Up Door Solutions

### 1900 Series (1950 Insulated)

- 26-gauge Grade E galvanized steel
- Low overhead solution

### 2000 Series (2250 Insulated)

- 16-gauge galvanized steel drums with steel ball bearings
- 26-gauge Grade E steel curtain

### 2500 Series (2750 Insulated)

- Heavy duty
- 10-gauge steel slide bolt lock
- Width up to 18 feet

### 3000 Series (3250 Insulated)

- Moderate to high wind load
- 80 degree windlock design

### 5000 Series (5250 Insulated)

- Aluminum bottom bar with steel angle reinforcement
- Wind-rated up to 18' wide

When it comes to withstanding Mother Nature's wrath, DBCI has the doors you need. Our wind-rated 5000 Series utilizes deep engagement guides and side curtain windlocks to maintain the operational integrity of the door and to comply with most state and local building codes, especially those in coastal regions. DBCI's commercial-grade steel curtain roll-up doors are designed to meet or exceed operational requirements for commercial doors with little or no maintenance.

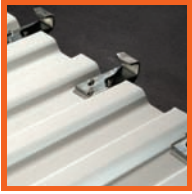


Integrity. Partnership. Quality.



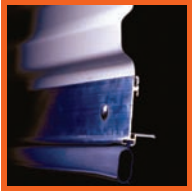
## Curtain

- 26-gauge galvanized, Grade E hard steel
- Deep-ribbed corrugation with three-rivet windlock attachment
- Maximum opening size of 18 x 16'
- Flexible wear strips
- The 5000 Series are wind-rated up to 18' wide. For wind test results, please contact DBCI sales at 800.542.0501.



## Bottom Bar

- 6063 – T6 aluminum extrusion
- 2" x 1 1/2" galvanized angle
- Bulb astragal
- Stainless steel nuts and bolts



## Axle-Drum Assembly

- 1 5/16" O.D. steel axle, 14-gauge
- 11-gauge axle on doors over 10' wide
- Utilizes 12", 16-gauge drums
- Shielded steel ball bearings in drums
- Full top sheet
- Oil tempered torsion springs



## A.C.E. Guide System

- 12-gauge galvanized steel
- 12-gauge wind lock bar
- Adjustable bolt on head stop
- Polyethylene wear strip
- Pre-punched for lock and attachment fasteners

## Hardware

- Saddle clamps with set fasteners
- 10-gauge slide locks; 2 per door
- 16-gauge step plate; 2 per door
- 1/4" steel angle T-bracket

## Technical Notes

- Doors up to 10' require 20" of headroom
- Doors 10' to 14' require 22" of headroom
- Doors over 14' require 24" of headroom
- **NOTE:** The 5000 Series is wind rated up to 18' wide. The pressure rating increases as the door width decreases. For test results, contact DBCI Sales at 800.542.0501.



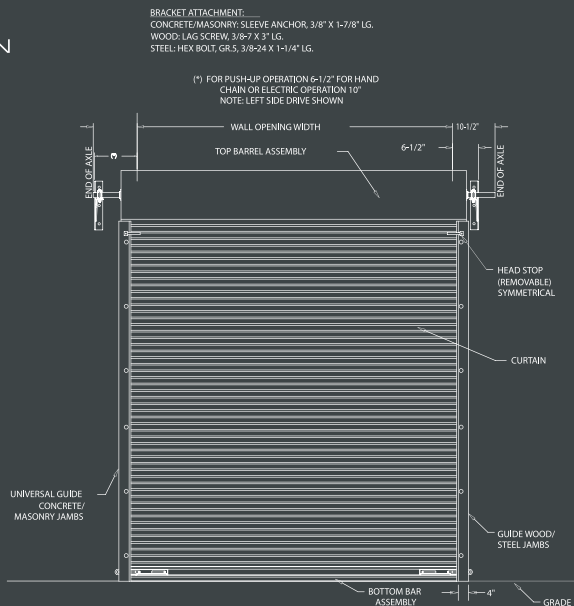
## Options

- Chain hoist 8:1 reduction
- Header seal
- Hood
- Steel mounting plates
- Electric operator



Also available with insulation (5250 Series)

### INTERIOR ELEVATION



### GUIDE DETAIL

